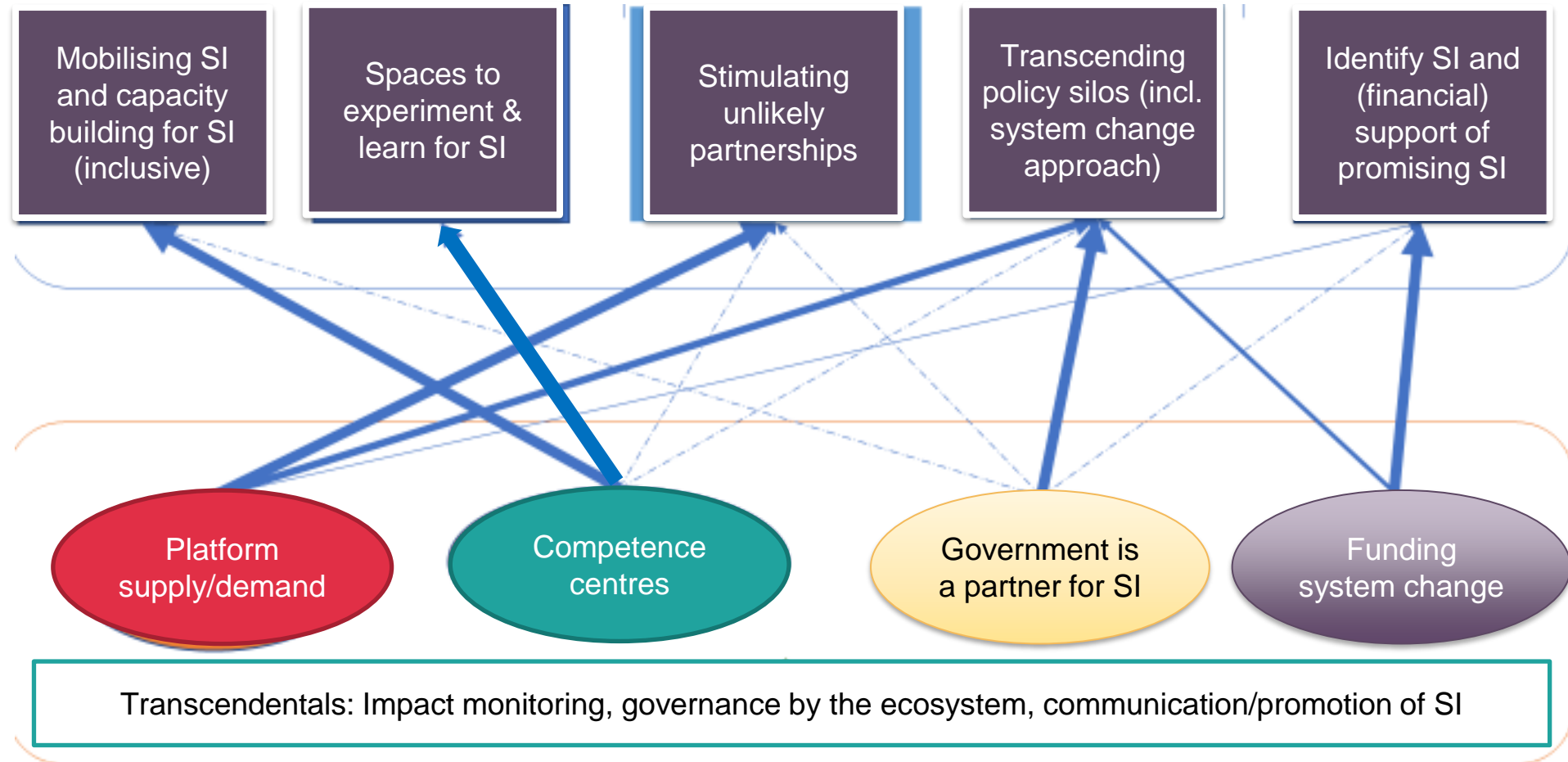
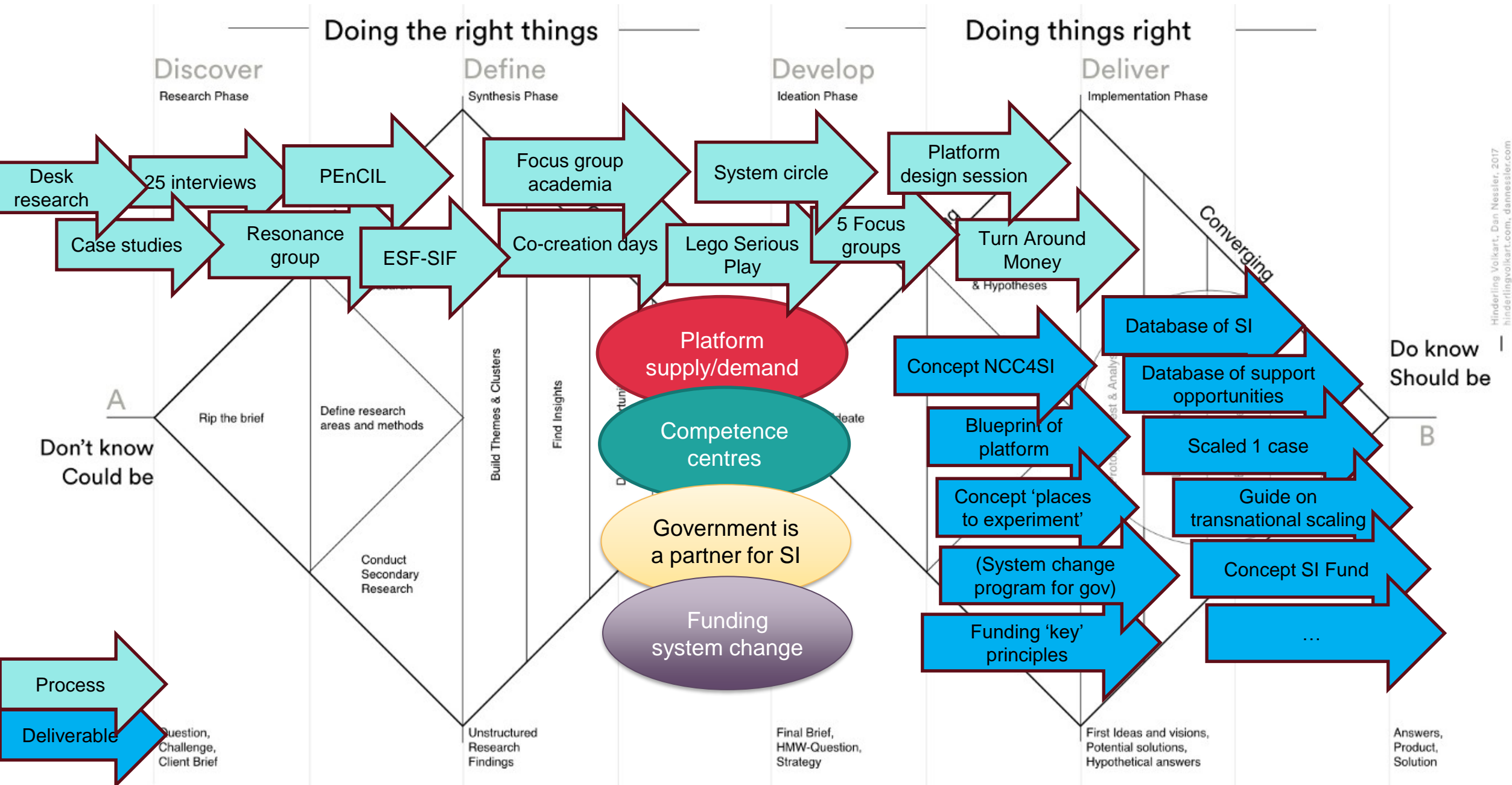




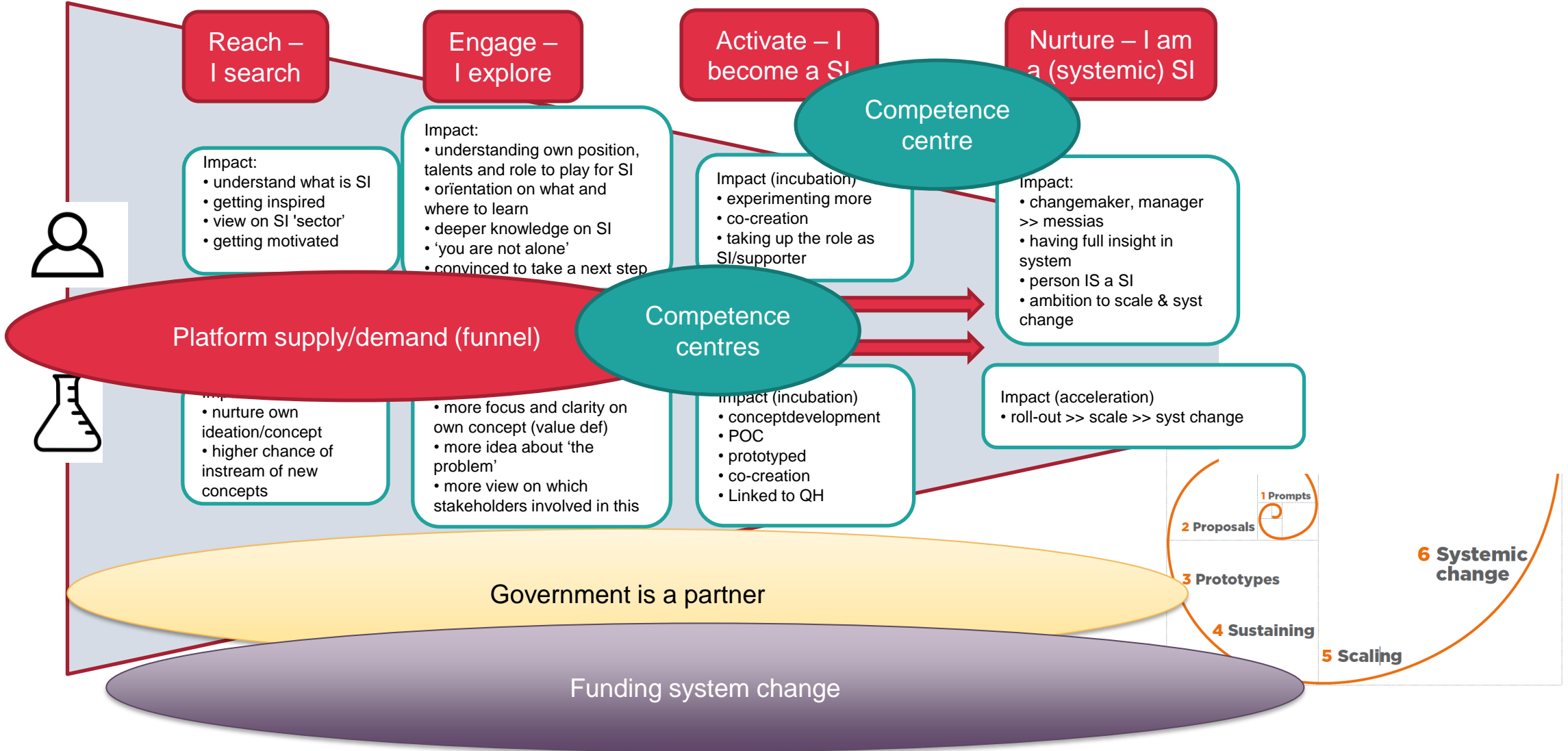
From objectives to impactful ideas



From impactful ideas to the design of impactful models (to be tested)



Strategy



Focus 1: Mapping of SI & ecosystem >> Digital platform

SI flourishes in a strong ecosystem that is itself innovative and flexible. A supporting ecosystem in this context is a infrastructure/network that stimulates collaboration and between different parties to tackle social challenges, and that supports all parties that play a role in solving these challenges.

HMWQ: How do we make the supporting ecosystem apparent, navigateable, and dynamic for SI's and the ecosystem itself so that SI can flourish and grow?

Design principles: matching supply and demand, connecting social innovators, using best practices of SI and support models, showcasing fails and successes

Actions (in progress):

- Focus group on determining functions of the platform
- Design brief
- Prototyping various functions (in progress)
- Communication strategy for this platform (to do)

-> **stakeholders involved:** social innovators, government, funding ecosystem, service designers

Learnings: Evolution is not linear, love the problem, 'real' SI involves system change, some principles are key

Result: Blueprint and first prototypes of a digital platform (in progress)

Focus 2a: Strengthening competences of new social innovators (1)

Social innovation requires certain competences. If we want more social innovation, we need to instill these competences in a wider audience. Social innovation also provides a very rich context for learning in an applied and informal way, together with others. Places for experiment, where citizens and other actors from the helix meet to tackle societal challenges together are a promising lever for this.

HMWQ: How do we design/strengthen a network of inclusive and accessible places for experiment that are competence-building and encourage co-production with others?

Design principles: inclusive and accessible, informal learning and learning together by doing together, local-global/physical-online, starting from what is there

Actions:

- Interviews with existing places to experiment
- Lego serious play for the ideal place for experiment
- Focus groups on inclusion, co-production, funding, cooperation with local governments and impact
- Design of a blueprint of the process we would like to install in the places for experiment
- Design of Sociale Innovatie-atelier (for ideation of SI)

-> **stakeholders involved:** places to experiment, experts on inclusion, co-production, funding, cooperation with local governments and impact

Learnings: Systemic social innovation asks for different competences 'love the problem' and 'unlikely partnerships'

Result: Blueprint for a competence centre and for a process to install in the places for experiment

Focus 2b: Strengthening competences of social innovators to grow

Social innovation requires certain competences. If we want more social innovation, we need to instill these competences in a wider audience. Attention is needed for building the competences of social innovators to scale their innovative solutions to increase the number of people that can benefit from the solution. There is a specific knowledge gap on scaling solutions internationally.

HMWQ: How can we strengthen the competences of social innovators to scale their solutions?

Actions:

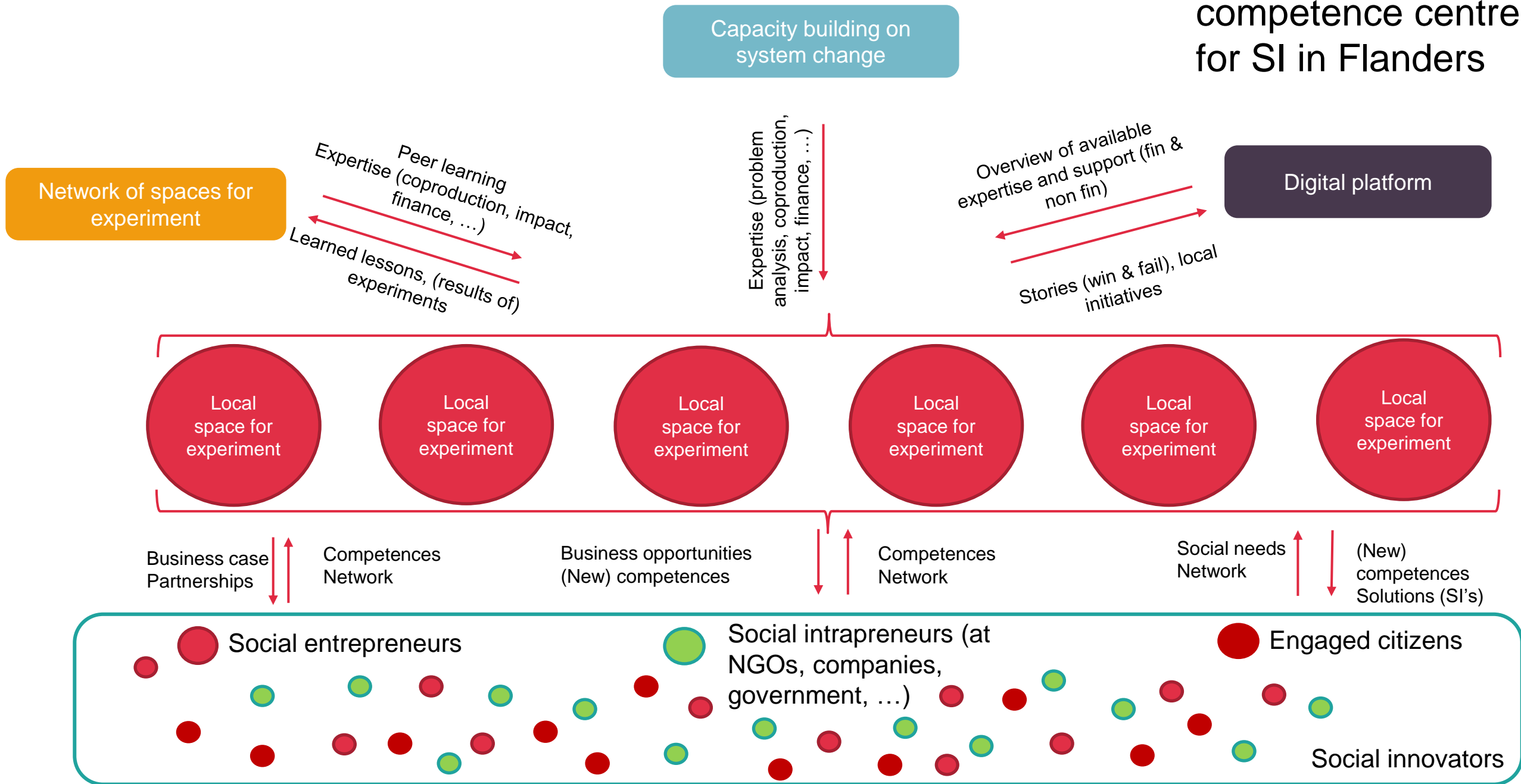
- Completion of Sociale Innovatie Atelier for ideation phase
- Additional program for SI's in roll-out phase in collaboration with Solifin
- 'Corporate Social Intrapreneurship' coach-the-coach to enable other societal stakeholders to support SI
- Webinar on international scaling for social innovation Trajectory where 8 Belgian social innovators actively explored and refined their strategy to scale internationally -> yearly program, organised by SIF
- Linking a programme on measuring impact to funding SI ecosystem

-> **stakeholders involved:** mature social innovators, other supporters from the ecosystem, experts, financial supporters for SI

Learnings: supporting SI requires an active and thriving support ecosystem with a governance structure

Results: Guide on international scaling, program on transnational scaling, support for governance structure

Set up of a competence centre for SI in Flanders



Focus 3: Government as a partner for SI

SI flourishes in a strong ecosystem that is itself innovative and flexible. A government with supportive and collaborative personnel at all levels of policy is key to let SI grow, scale and make systemic changes to solve complex societal challenges. SI can also flourish and grow within and from governmental bodies.

HMWQ: How do we involve and stimulate governmental bodies so that they recognize and support SI to find the right support from all levels of policy?

Developmental principles: involving all policy levels, focus on concrete cases, focus on 'the willing' first

Actions (in progress):

- Focus on existing models: innovative partnerships, Buy Social, Circular Hubs, Social Ec., INO, 'Burgerbudget'
- System change program: INO – VITO (SIF / ESF involved)
- Forming a champions of change group: 'handbook', impact assessment, communication actions (not realised)
- CSI with governmental bodies (not realised)

-> **stakeholders involved:** INO - Flemish level, VVSG – local level, funding initiatives, syst innovators

Learnings: do not isolate the willing (2 senses), start small from practices, communication is key

Results: more openness to system change, more idea about 'ambassadors', more overview on support

Focus 4: Identification/financial support of SI >> funding system change

The landscape of SI is growing. There is a great need of (pre-)seed funding to develop and validate these concepts/prototypes, and to select promising SI to let them grow to their full potential. The funding system needs to change, AND funding SI that can change the system needs to be developed as well.

HMWQ: How do we align public and private funding to provide 'lifelong' support for (system/life changing) SI's?

Principles: full support of ecosystem, build a collaborative ecosystem, innovate financial instruments/models, focus more on selection criteria

Actions (in progress):

- Mapped actual funding opportunities for SI (incl. capacity building per 'phase') -> on 'platform' + disseminated
- Creating and testing innovative financial instruments: Concept Fund for SI, model for funding places to experiment and starting SI (micro-entrepreneurship);
- Programs/models: Turn around money event, matchmaking event for SI and scaling, system changers INO/VITO
- Testing the application of 'funding systems change'-principles (Ashoka – not realised)

-> **stakeholders involved:** Solifin, Trividend, Ashoka, Growfunding, Stuyfplekken, experts, IF Belgium

Lessons learnt: the momentum is there, funding principles needed, capital is there but needs adaptations

Results: 2 concepts of funds, more overview of support opportunities/gaps, more willingness to support